


# The Centricapead

Veronica Johnson  
2020





South Carolina is  
A state known  
For its beautiful  
Beaches and  
The iconic  
Palmetto tree.

The state also  
Provides  
A plethora  
Of urban  
Legends.



However the topic  
Of this essay is  
Entirely real.

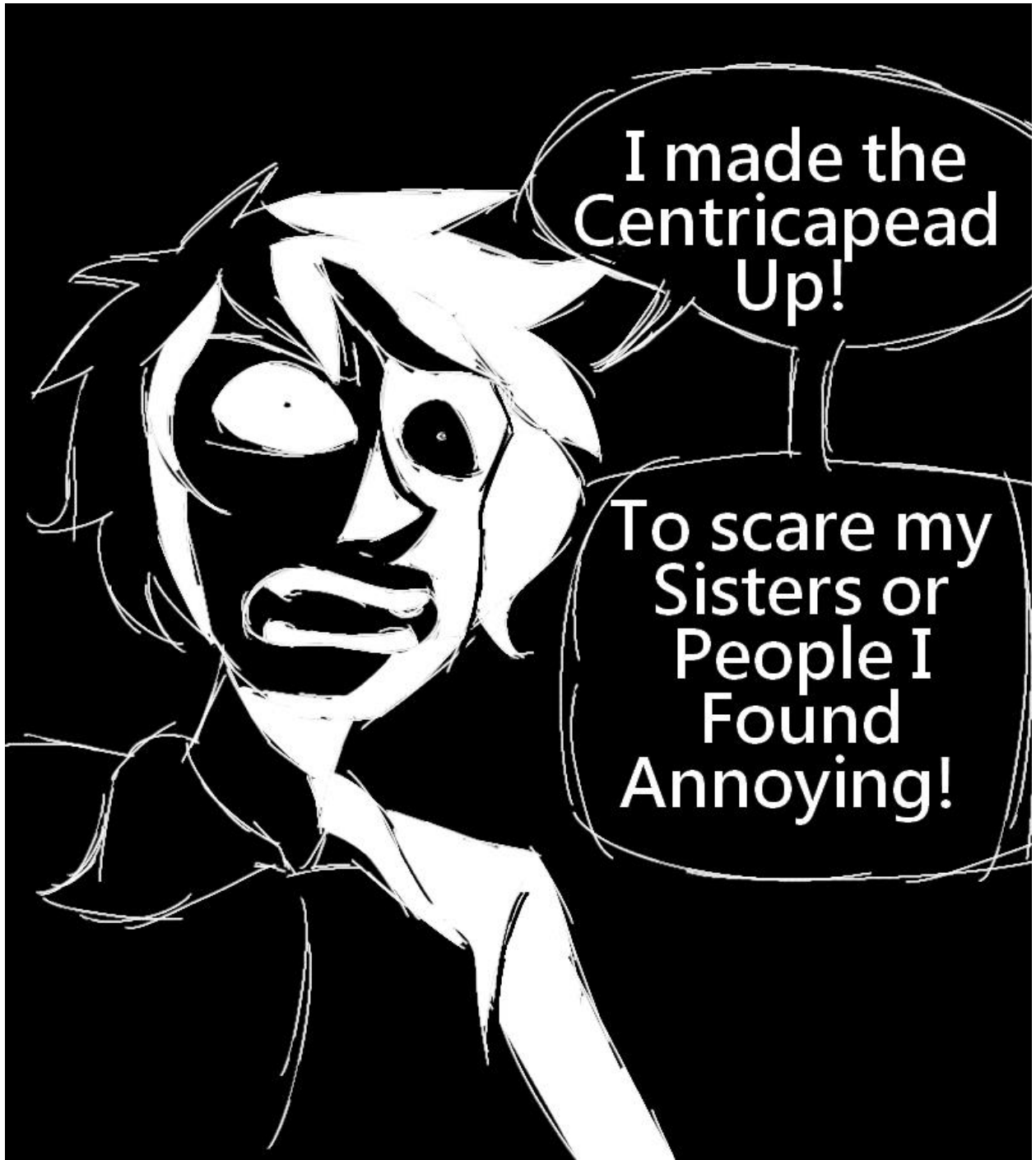
A denizen of  
The states  
Vast swampland.

# The Centricapead



**The Centricapead can  
Grow 10 meters in length  
And 30 centimeters across.**





I made the  
Centricapead  
Up!

To scare my  
Sisters or  
People I  
Found  
Annoying!

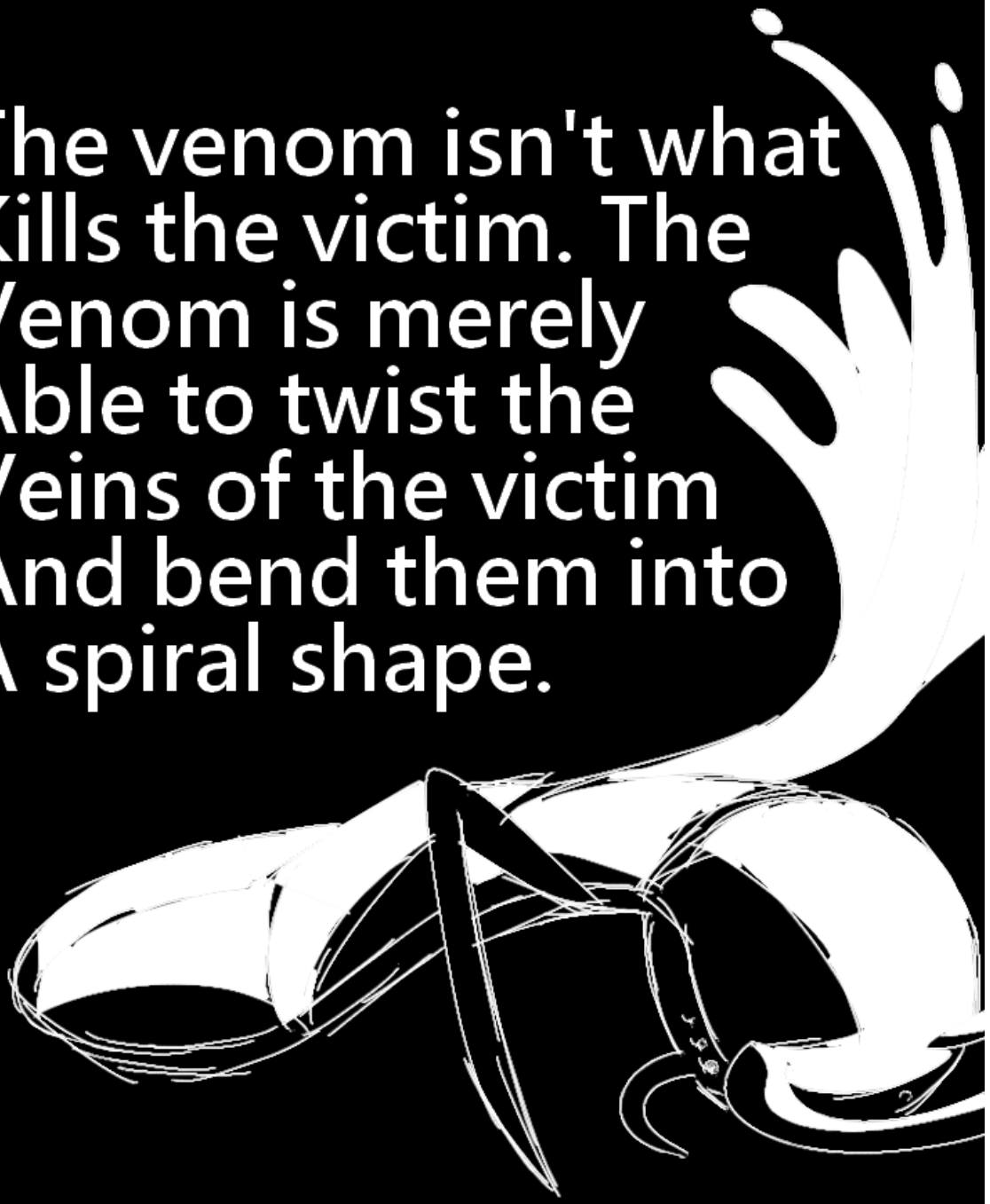
The Centricapead Is famously Known for its "death mark".

When the Bug bites Something It injects a Venom into The blood Stream.





The venom isn't what  
Kills the victim. The  
Venom is merely  
Able to twist the  
Veins of the victim  
And bend them into  
A spiral shape.



A black and white graphic featuring a central spiral that tightens as it moves towards the center. The spiral is composed of thick, white, hand-drawn lines. The background is black. Three blocks of white text are overlaid on the image: one at the top, one in the middle, and one at the bottom.

This restricts blood  
Flow to the brain.

The spiral will  
Become  
tighter  
and tighter.

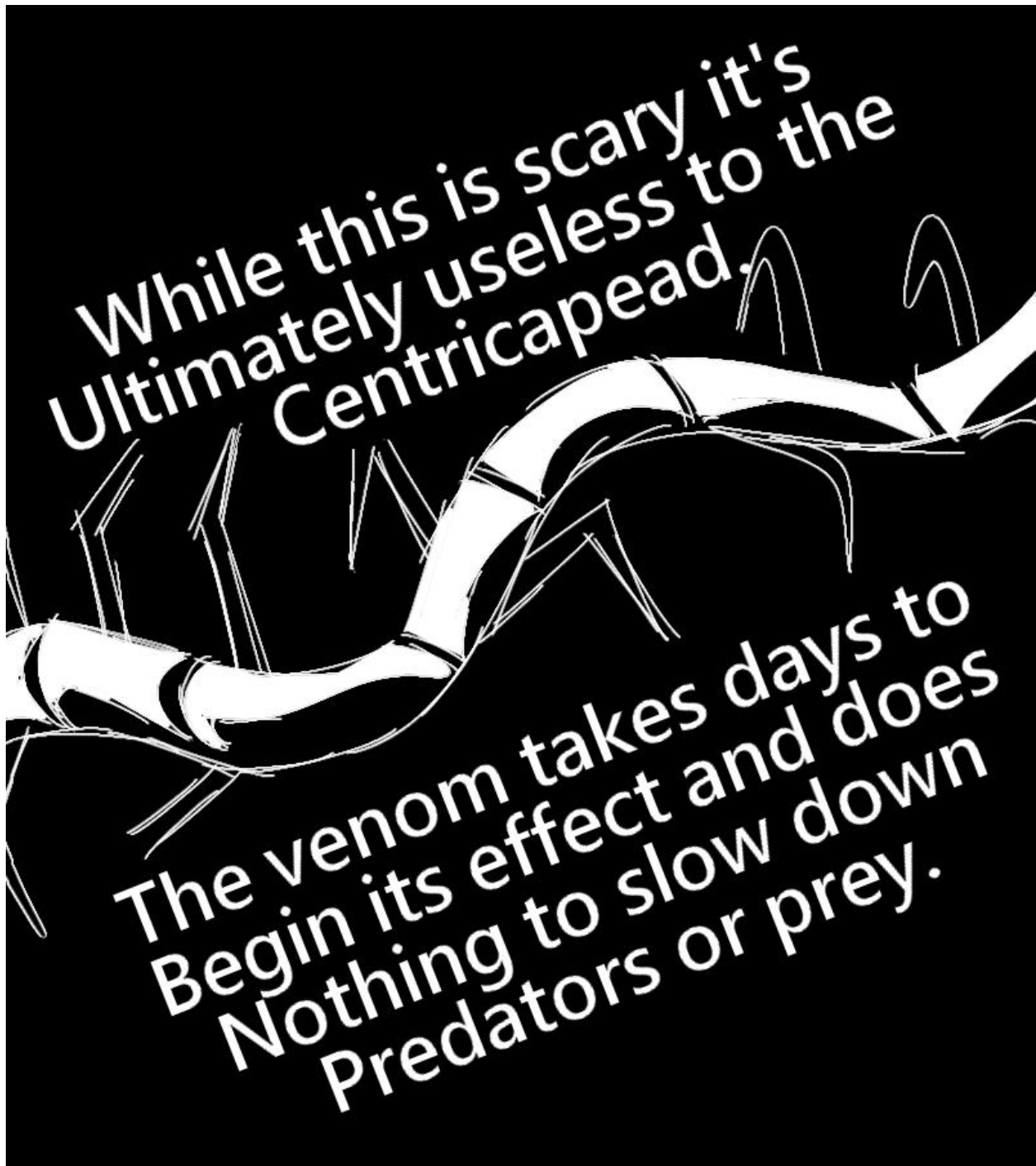
Until the victim  
Dies of a blood clot.





**THIS  
ISN'T  
HAPPE-  
NING!**

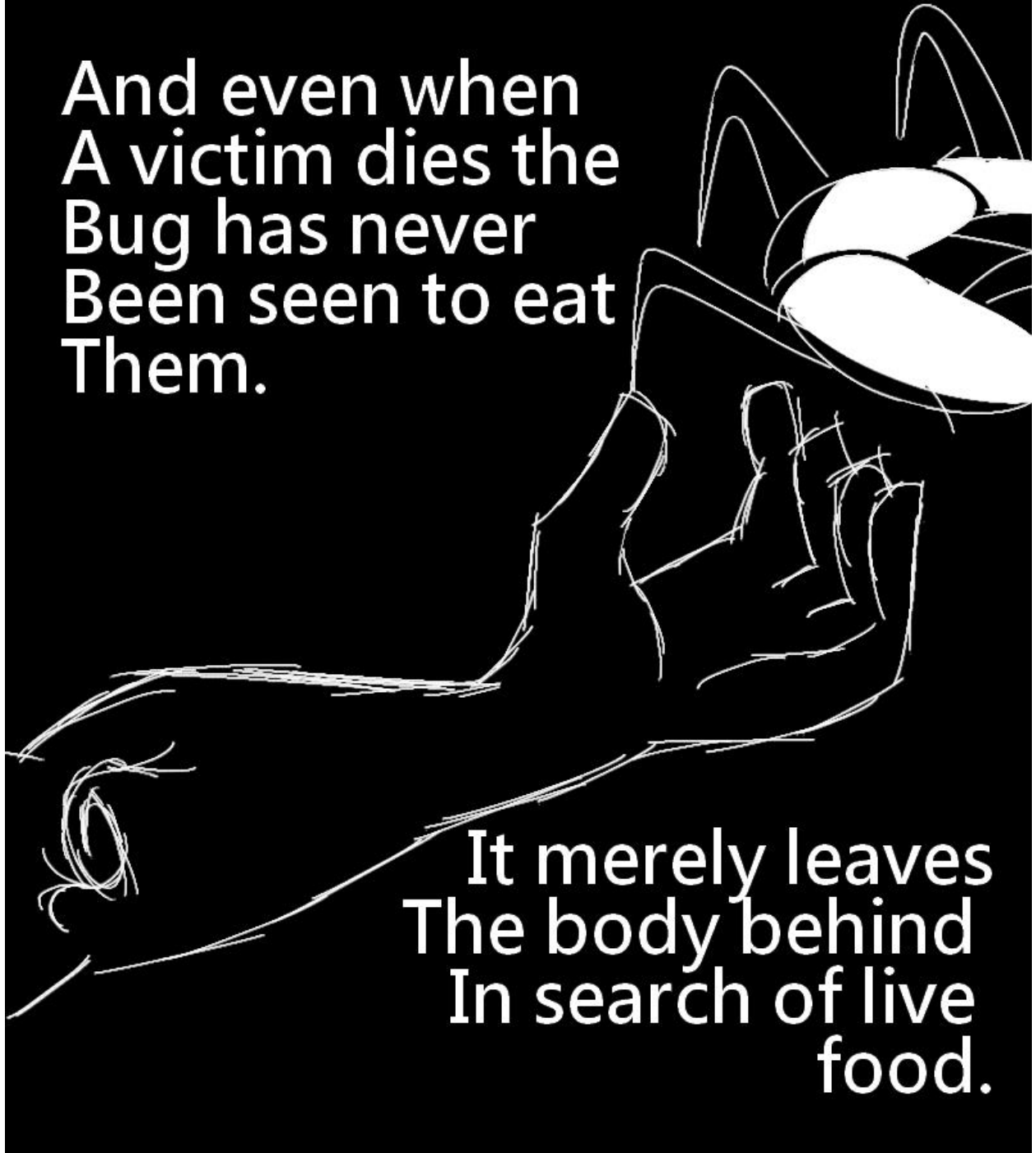
**THIS IS  
LITERALLY  
IMPOSSIBLE!**



While this is scary it's  
Ultimately useless to the  
Centricapead.

The venom takes days to  
Begin its effect and does  
Nothing to slow down  
predators or prey.

And even when  
A victim dies the  
Bug has never  
Been seen to eat  
Them.



It merely leaves  
The body behind  
In search of live  
food.

Many have wondered if  
it simply kills for sport.



A stylized, high-contrast black and white illustration of a centricapead. The top portion shows a large, rounded head with a prominent eye and a curved mouth. Below the head, the body is depicted with a series of dark, rounded segments separated by lighter lines, suggesting a segmented or flexible structure. The background is solid black.

Like a  
cockroach  
the brain of  
the Centricapead  
stretches along  
it's body

Like a god



However most  
Believe the bodies  
To serve as  
Territorial markers.

But as of now no  
Definitive answer  
exists.

*IT'S FEEDING*  
*IT'S EGG*

*DIFFERENT CULTURES  
REVERENCED IT AS  
AN IMMORTAL GOD  
AN IMMORTAL GOD  
AN IMMORTAL GOD  
AN IMMORTAL GOD*

*IT CANNOT DIE  
NO ONE HAS EVER  
KILLED ONE*

*THE CENTRICAPEAD  
CAN GROW UP TO 80  
METERS IN LENGTH*

*IT NEVER STOPS*





DEVOUR

SWALLOW

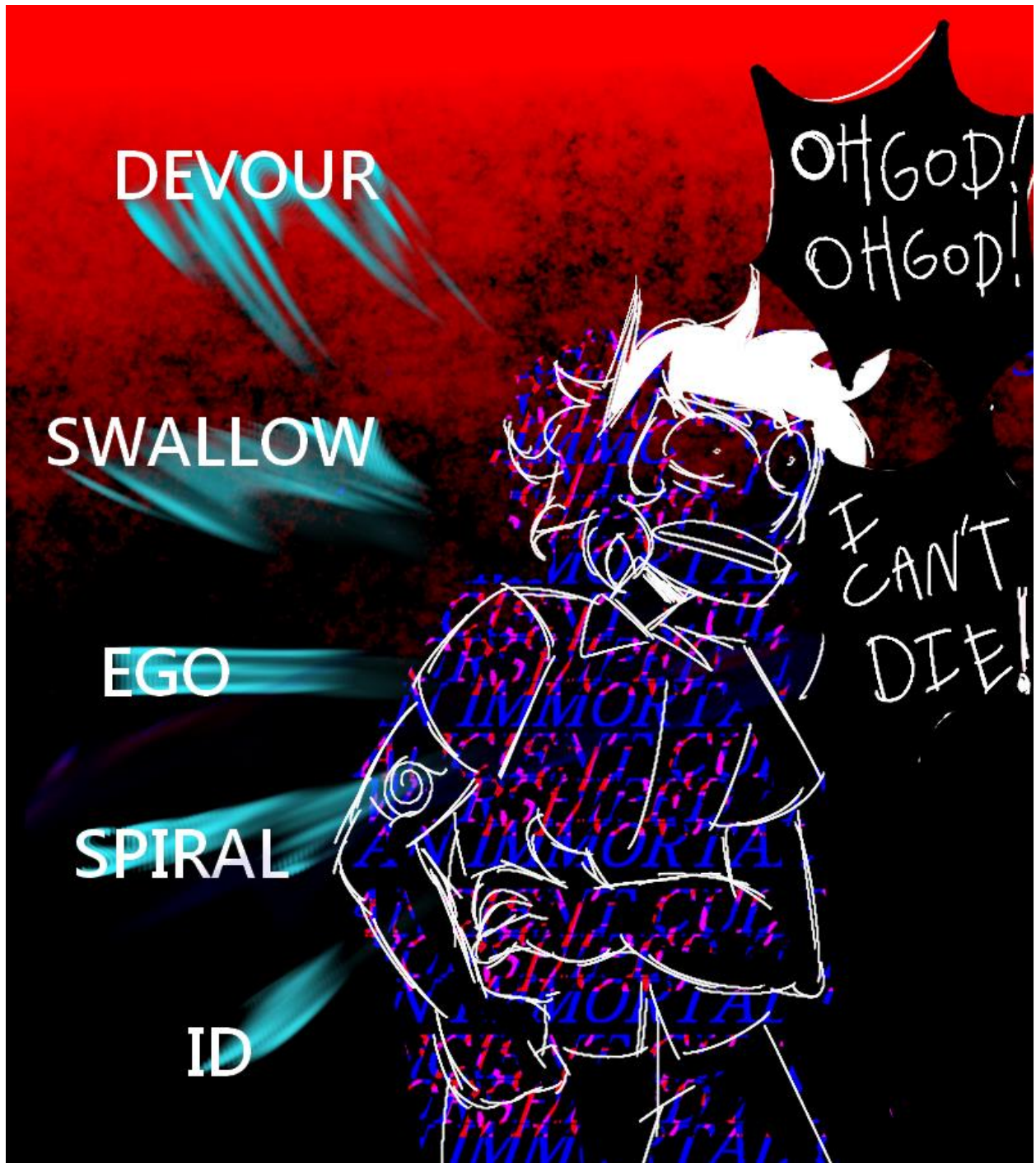
EGO

SPIRAL

ID

OH GOD!  
OH GOD!

I CAN'T  
DIE!





Wait no I  
Didn't make  
It up.

My friend did,  
I think.

Or maybe my  
Dad.

Ugh...



Oh my  
god...



this  
sucks...





A graphic featuring a red and black spiral that starts from a central point and expands outwards, creating a hypnotic effect. The spiral is composed of alternating red and black bands. Overlaid on the spiral is white text in a serif font. The text is arranged in two main sections: the top section reads "The beast waits" and the bottom section reads "The spiral beckons".

The beast  
waits

The spiral  
beckons